

Product Specifications

WVBplug

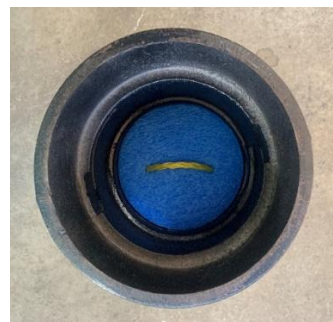
Product: WVBplug

Product Characteristics

Plug Body: 2.2# closed cell polyethylene foam with a MDL surface that will **accept permanent marker**, USA origination
R-value 2.5 per inch
Minimum height 4"
Will not absorb sediment or water, lightweight

Handle: 5/16" Hollow Braid Polypropylene
Tensile strength: 975 lbs., safe working load: 170 lbs.

Handle connection: Long bury spliced with heat weld. The handle is installed through the body of the plug and heat welded. The polypropylene handle is highly visible and is resistant to rot, mildew, oils, gas and most chemicals.



The Valve Box Plug can also be ordered to fit many other valve stem riser pipe options.

Product #	Description
WVBplug	6" x 4" Plug, writeable surface



Made in USA

www.ckrproducts.com

SARTELL, MN 56377 USA